



KONICA MINOLTA

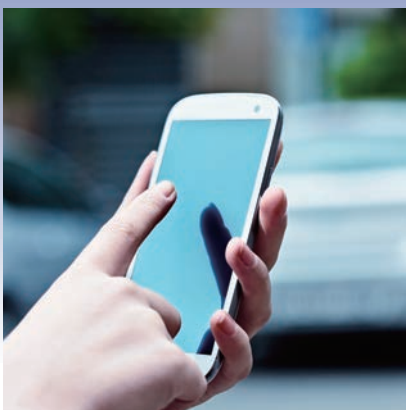
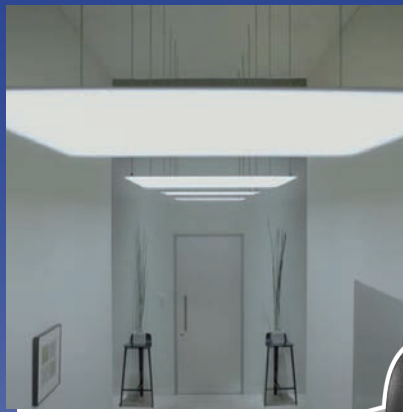
**NEW**

**2D Color Analyzer**

**CA-2500**

**Ideal for display mura (nonuniformity) evaluation and inspection on smartphones and tablet PCs.**

**Accurately and easily measures the distribution of luminance and chromaticity.**



Giving Shape to Ideas

The included software provides advanced functionality with simple operation to make the entire measurement process easier, from measurement preparations such as focusing and positioning through measurements of luminance and chromaticity distribution to evaluation of measurement results.

**Own a CA-2000?**

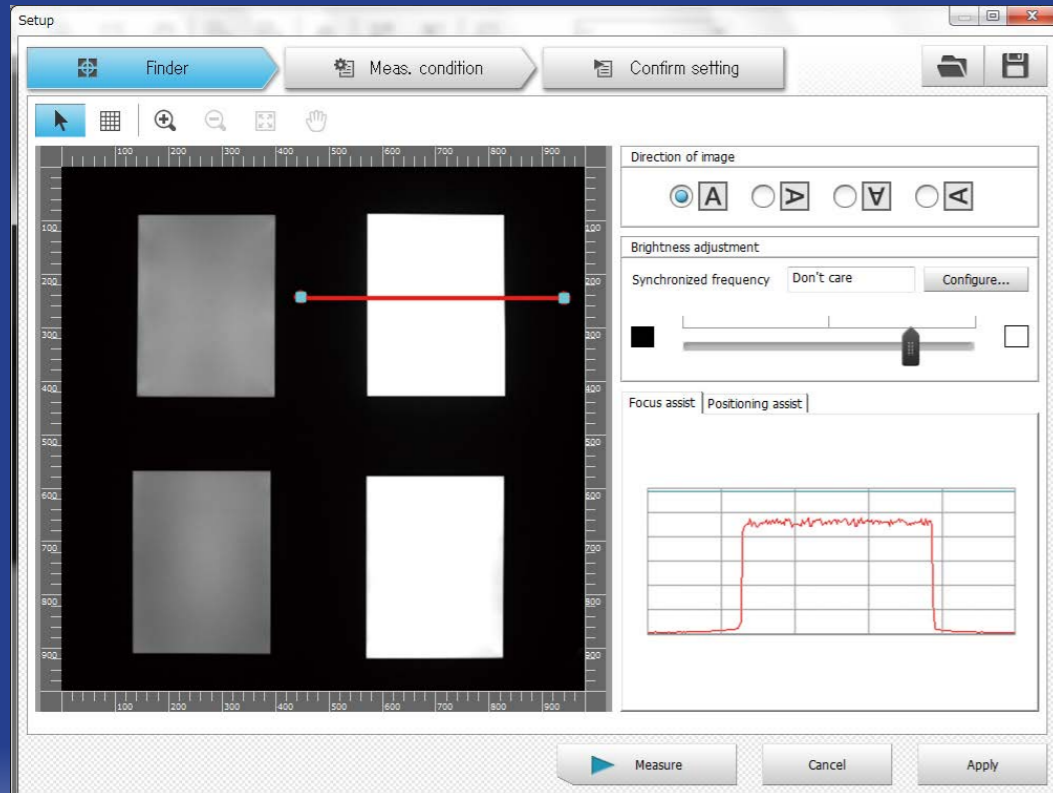
The new CA-S25w software can also be used with existing CA-2000 instruments. It provides vast improvements over the previous CA-S20w software, while also being able to read data measured and saved using CA-S20w. Visit our website to download the latest CA-S25w free of charge.

**GUI assists with normal workflow**

Measurement preparations

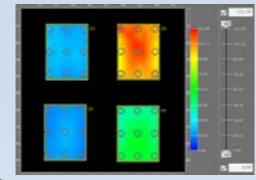
**Easy-to-understand screens with easy-to-use tools**

During/after measurement

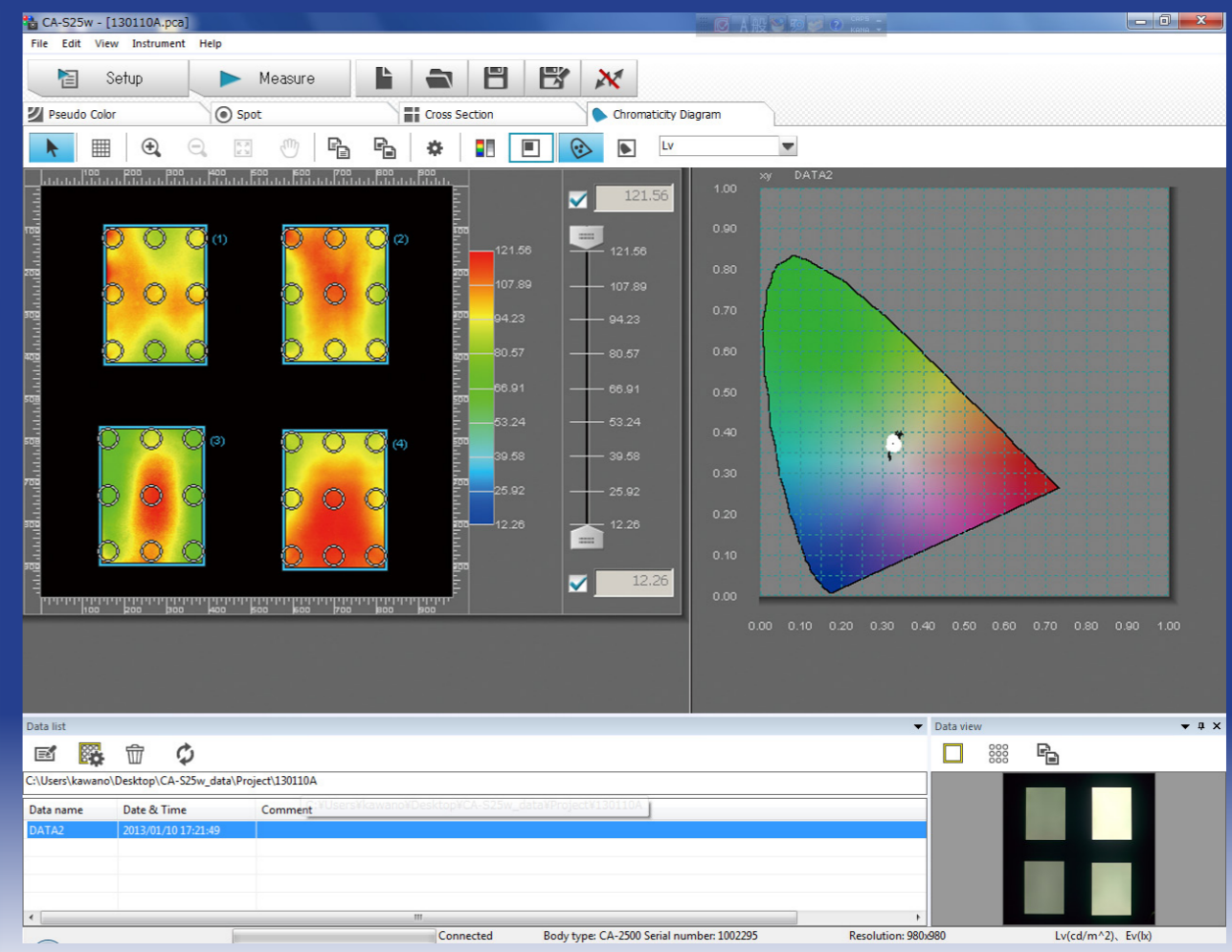


**Automatic measurement area extraction function**  
 The light-emitting areas of measurement subjects can be automatically extracted and set as evaluation regions. This eliminates the need for manually defining and positioning evaluation regions, reducing the setup time required.

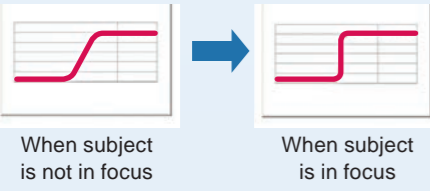
**Multi-subject measurement capability**  
 Evaluation of the mura (unevenness) of multiple subjects can now be performed simultaneously. With the previous CA-S20w, the same tone gradation scale was used for all subjects; if subject luminances were very different, adjusting the scale to properly view one subject caused saturation of tones in evaluation areas for other subjects. But with CA-S25w, each evaluation area has its own tone gradation scale which can be individually adjusted according to the subject luminance. This allows the mura of multiple subjects with widely different luminances to be viewed simultaneously on the same screen.



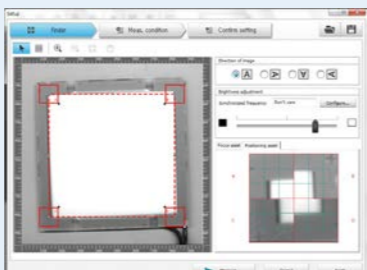
With single-scale setting of previous software



**Focus assist function**  
 Focus adjustment can be performed easily by viewing the cross-sectional slope of the luminance at the border between bright and dark areas.



**Positioning assist function**  
 The positioning and orientation (tilt and twist) of the CA-2500 relative to the measurement subject can be easily checked while making fine adjustments, reducing the work and time required to achieve proper positioning and orientation.



**Various mura (unevenness) display functions**

**Pseudocolor display**  
 Luminance and chromaticity distribution can be easily observed.

**Spot measurement**  
 The size and number of spots to be evaluated (indicated by black circles in the screen example above) can be freely defined by the user to enable multi-point measurement using the average values of each spot. Up to a maximum of 2500 spots can be defined.

**Chromaticity diagram display**  
 Variations in chromaticity can be displayed on the chromaticity diagram display.

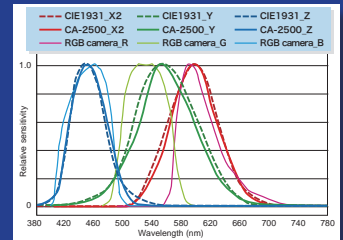
**Other convenient functions**

**Data transfer to Excel®, etc.**  
 The desired range of data or spot values can be selected and transferred to Excel®, Word®, etc. via the clipboard. The various graphs and displays can also be copied and pasted, making it easy to create reports.

**Multiple exposure function**  
 By combining measurement data obtained using exposure times optimized for different luminance levels, subjects requiring a wide dynamic range (such as a gray scale) can be easily measured.

## XYZ filters provide high correlation with the spectral response of the human eye.

Instead of the RGB color-separation filters used by digital video cameras, etc., the CA-2500 uses XYZ filters that closely match the CIE 1931 color-matching functions to provide luminance and chromaticity measurements that have high correlation with the spectral response of the human eye.



## Interchangeable lenses for measurements of various subjects

Standard, wide-angle, and telephoto lenses (plus two macro rings for the telephoto lens) are available, enabling the optimum lens to be selected according to the particular subject, measurement area, or measurement method.

## Comprehensive factory calibration

Each lens is individually factory-calibrated at multiple focal points to correct for sensitivity variations due to the combination of sensor, optical filters, and the lens itself. By using the included calibration data, high-accuracy measurements of luminance and chromaticity distribution can be taken immediately after receiving the product without being restricted to a particular measurement method, subject size or subject brightness.

## Even flickering light sources such as PDP or OLED televisions can be measured with good accuracy.

The synchronization frequency (4 to 2,000 Hz) of display devices and pulsed light sources can be input to enable synchronized measurements.

### **NEW** Includes advanced Data Management Software CA-S25w as standard accessory

Advanced functions such as focus assist function, positioning assist function, and automatic measurement area extraction function greatly simplify troublesome measurement preparations.

### **NEW** Includes SDK (software development kit)

The SDK can be used by customers to efficiently create their own software for controlling the CA-2500.

Compact and lightweight so it can be easily set up where needed.

### **NEW** Expanded low-luminance measurement range

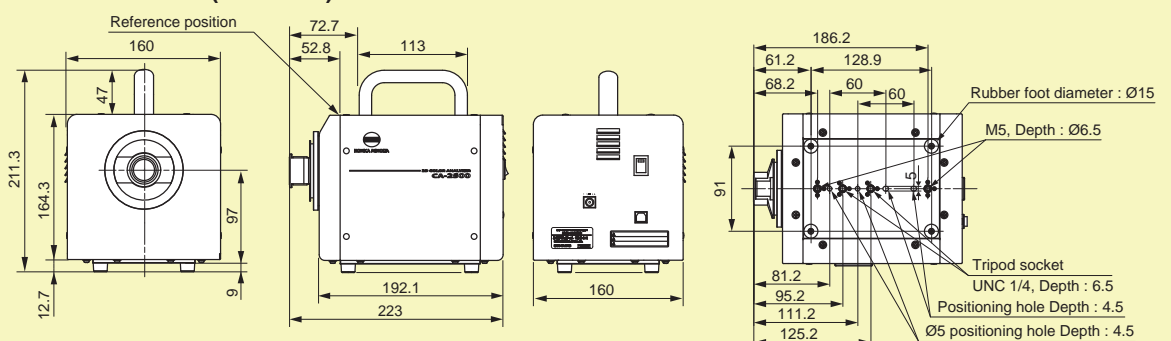
The minimum measurable luminance has been improved from 0.1 cd/m<sup>2</sup> to 0.05 cd/m<sup>2</sup>.



### **NEW** Improved durability

Service life measurement cycles have been increased to approximately 5 times that of the CA-2000.

## ■ Dimensions (Unit: mm) \*When standard lens and lens hood are attached

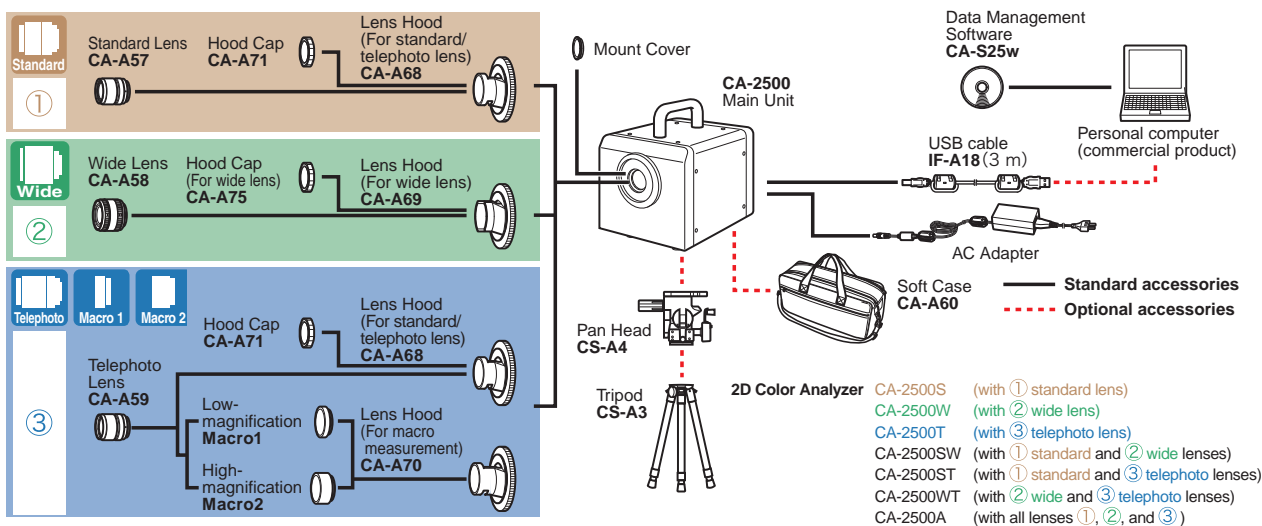


## Applications

- Simultaneous luminance/chromaticity distribution measurement of multiple small- or medium-sized LCD or organic EL panels
- Luminance/chromaticity measurement of single large-sized LCD or organic EL panels
- Luminance distribution measurements in illumination field
- Measurements of luminance/correlated color temperature distribution of various light-emitting subjects
- Luminance distribution measurements of automobile instrument panel meters



## System Configuration



Components other than those shown in the areas shaded    are common for all packages.

\* Each lens comes with a lens cap, mount cap, and calibration data DVD.

## Measurable object size with typical measurement distances (Width/height of measurement square)

Distance (mm)	Standard lens			Wide lens			Telephoto lens			Low magnification macro ring			High magnification macro ring		
	Measurement size (mm)	Measurable display size (inches)		Measurement size (mm)	Measurable display size (inches)		Measurement size (mm)	Measurable display size (inches)		Measurement size (mm)	Measurable display size (inches)		Measurement size (mm)	Measurable display size (inches)	
	16 : 9	4 : 3		16 : 9	4 : 3		16 : 9	4 : 3		16 : 9	4 : 3		16 : 9	4 : 3	
250	98	4.4	4.8	190	8.6	9.3									
300	121	5.5	6	235	11	12									
500	212	9.6	10.4	416	19	20				57	2.5	2.8			
1000	439	20	22	869	39	43	130	5.9	6.4						
2000	892	40	44	1776	80	87	275	12	14						
3000	1345	61	66	2682	121	132	420	19	21						
5000	2252	102	111	4495	203	221	711	32	35						

## Data Management Software CA-S25w

**Controllable instruments :** CA-2000; CA-2500

**Display language :** English; Japanese  
(Selectable at time of installation)

### System Requirements

**OS** Windows® XP Professional 32-bit SP3, 64-bit SP2  
Windows® 7 Professional 32-bit, 64-bit  
(English, Japanese and Chinese (Simplified versions))

• The hardware of the computer system to be used must meet or exceed the greater of the recommended system requirements for the compatible OS being used or the following specifications.

**CPU** Pentium® 4 2.8 GHz equivalent or higher

**Memory** 1024 MB or more

### Hard Disk

Needs free space of 80 MB at least on system drive (where OS is installed)  
In addition, each lens needs the following free spaces for installing calibration data.

For standard lens: approx. 540 MB

For wide lens: approx. 470 MB

For telephoto lens: approx. 1.3 GB

To save measurement data on hard disk, additional free space is required (approx. 110 MB for 10 measurement data)

Approx. 1 MB required for setting files containing spot settings, measurement condition settings, etc.

### Display

Display capable of at least 1280 x 768 dots / 65536 colors (High color, 16-bit)

### Others

Optical drive capable of reading CD-ROM (for installing software) and DVD-ROM (for installing calibration data) necessary.

USB port: For connecting measuring instrument

# Main Specifications CA-2500

Model	CA-2500S	CA-2500W	CA-2500T		
Light receptor	CCD image sensor (monochrome); 2/3-inch; Effective number of pixels: 1,000 x 1,000 pixels; Equipped with XYZ filter (closely matches CIE 1931 color-matching function) and ND filter				
Lens	Interchangeable Standard, wide, and telephoto lenses; low-magnification and high-magnification macro rings (for use with telephoto lens)				
Measurement points (Resolution)	980 x 980 (490 x 490 or 196 x 196 selectable by using Data Management Software CA-S25w)				
Color indication modes	XYZ, L <sub>v</sub> x <sub>y</sub> , L <sub>v</sub> u <sub>v</sub> <sup>*</sup> , T <sub>Δuv</sub> , Dominant wavelength, Excitation purity, L <sub>v</sub> contrast				
Display modes	Pseudocolor, Chromaticity diagram, Spot, Cross section, Color difference				
Measurement sizes (length per side of square) (*1)	Standard lens	Wide lens	Telephoto lens		
	Approx. 98 mm or more (depending on the distance)	Approx. 145 mm or more (depending on the distance)	Approx. 115 mm or more (depending on the distance)	With low-magnification macro ring	With high-magnification macro ring
Measurable size for typical measurement distances (size/distance)	98 mm / 250 mm	Approx. 145 mm / 200 mm	Approx. 115 mm / 900 mm	Approx. 57 mm (Fixed)	Approx. 27 mm (Fixed)
	210 mm / 500 mm	Approx. 410 mm / 500 mm	Approx. 275 mm / 2,000 mm		
	440 mm / 1,000 mm	Approx. 850 mm / 1,000 mm	Approx. 420 mm / 3,000 mm	57 mm / 500 mm (Fixed) Approx.	27 mm / 300 mm (Fixed) Approx.
	890 mm / 2,000 mm	Approx. 1,770 mm / 2,000 mm	Approx.		
Measurement luminance range (including ND filter use)	0.05 - 100,000 cd/m <sup>2</sup>	0.05 - 100,000 cd/m <sup>2</sup>	0.25 - 100,000 cd/m <sup>2</sup>	0.25 - 100,000 cd/m <sup>2</sup>	0.5 - 100,000 cd/m <sup>2</sup>
Measurement time (*2)	Single : Approx. 5 sec. or more; 4-time integration: Approx. 6 sec. or more; 16-time integration: Approx. 10 sec. or more; 64-time integration : Approx. 25 sec. or more; 256-time integration : Approx. 80 sec. or more				
Accuracy (*3)	Luminance	±3 %	±3 %	±3 %	±3 %
	Chromaticity	±0.005	±0.005	±0.005	±0.005
Repeatability (*4)	Luminance	0.5 %	0.5 %	0.5 %	0.5 %
	Chromaticity	0.001	0.001	0.001	0.001
Inter-point error (*5)	Luminance (*6)	±2 %	±2 %	±2 %	±2 %
	Chromaticity (*6)	±0.002	±0.002	±0.002	±0.002
	Luminance (*7)	±3 %	±3 %	±3 %	±3 %
	Chromaticity (*7)	±0.003	±0.003	±0.003	±0.003
Other functions	Measurement sync (Synchronization frequency selectable), User calibration Integration function				
Interface	USB 2.0 or higher				
Operating temperature and humidity range (*8)	10-30°C, Relative humidity 70% or less/No condensation				
Storage temperature and humidity range (*8)	0-30°C, Relative humidity 70% or less/No condensation, 30-35°C, Relative humidity 55% or less/No condensation				
Size	Body only	160 (W) x 164 (H) x 192 (D) mm (Height including handle: 211 mm)			
	When lens and lens hood are attached	224 (D) mm	219 (D) mm	224 (D) mm	230 (D) mm
Weight	3.5 kg approx. (when standard lens and lens hood are attached)				
Power source	AC adapter 100-240 V ~, 0.75 A, 50-60 Hz				

- \*1: Error in angle of view: 7%  
 \*2: Measurement time differs depending on brightness of measurement object, PC performance, and data processing contents.  
 The specifications above were obtained under Konica Minolta's measurement conditions shown below:  
 PC CPU : Intel Core i7-3770 3.40GHz  
 Memory : 8GB  
 Data processing : Pseudocolor display of luminance data  
 Resolution : 980 x 980  
 Shutter speed : Y measurement : 1/64 sec., XZ measurement : 1/32 sec.  
 Measurement subject brightness:  
 Standard/wide lens: Approx. 80 cd/m<sup>2</sup>, Telephoto lens: Approx. 300 cd/m<sup>2</sup>  
 Low-magnification macro ring and telephoto lens: Approx. 400 cd/m<sup>2</sup>,  
 High-magnification macro ring and telephoto lens: Approx. 600 cd/m<sup>2</sup>  
 \* The measurement time becomes longer when the object is dark. The longest measurement time is approx. 14 seconds with 1-time integration, approx. 45 seconds with 4-time integration, approx. 3 minutes with 16-time integration, approx. 11 minutes with 64-time integration and approx. 44 minutes with 256-time integration  
 \*3: The specifications above were obtained under Konica Minolta's measurement conditions shown below:  
 Measurement subject brightness:  
 Standard/wide lens: Approx. 35 cd/m<sup>2</sup>, Telephoto lens: Approx. 140 cd/m<sup>2</sup>  
 Low-magnification macro ring and telephoto lens: Approx. 250 cd/m<sup>2</sup>,  
 High-magnification macro ring and telephoto lens: Approx. 250 cd/m<sup>2</sup>  
 Distance: Minimum distance of each lens, Evaluation: Based on the average obtained within 10% range at the center of the screen. Temperature: 23°C±2°C, Relative humidity: 40%±10%, Measuring light: White, reference light source, Integration: 64 times (Normal mode)  
 \*4: The specifications above were obtained under Konica Minolta's measurement conditions shown below:  
 Resolution: 196 x 196, Shutter speed: Y measurement: 1/64 sec., XZ measurement: 1/32 sec. Gain: Normal (x1), Light intensity level: Midpoint of appropriate light intensity range, Evaluation: Based on the maximum repeatability (2σ) of all pixels, Temperature: 23°C±2°C, Relative humidity: 40%±10%, Measurement subject: White, reference light source, Integration: 64 times (Normal mode)  
 \*5: The specifications above were obtained under Konica Minolta's measurement conditions shown below:  
 Measurement subject brightness:  
 Standard/wide lens: Approx. 40 cd/m<sup>2</sup>, Telephoto lens: Approx. 160 cd/m<sup>2</sup>  
 Low-magnification macro ring and telephoto lens: Approx. 200 cd/m<sup>2</sup>,  
 High-magnification macro ring and telephoto lens: Approx. 350 cd/m<sup>2</sup>  
 Distance: Calibration distance of each lens, Resolution: 196 x 196  
 Evaluation (\*6) : Based on the maximum/minimum values obtained in a square at the center of the screen measuring 60% of the height and width of the entire screen  
 (\*7) : Based on the maximum/minimum values obtained in the entire screen  
 Temperature: 23°C±2°C, Relative humidity: 40%±10%, Measurement subject: White, reference light source, Integration: 64 times (Normal mode)  
 \*8: Even if the instrument is stored within the specified usage (or storage) temperature humidity range, the displayed value may change depending on long-period usage or storage conditions.

## Cautions Regarding Temperature / Humidity Conditions for CA-2500

It is recommended that the instrument be used and stored under standard conditions (Temperature: 23° C; Relative humidity: 40 %), and that areas subject to high temperature and/or humidity be avoided. In addition, in order to maintain the measurement accuracy or this instrument, it is recommended that it be inspected regularly about once a year. For details on having the instrument inspected, please contact the nearest Konica Minolta authorized service facility.  
 Even if the product is used within the specified operating temperature/humidity range or stored within the specified storage temperature/humidity range, the displayed values may be affected by long-term conditions of use or storage.  
 If the instrument is left under the following high-temperature conditions for a long period of time, the displayed values may change as follows:  
 Temperature: 30° C; Relative humidity: 70 %; Period under these conditions: 720 hours (30 days)  
 Accuracy: Luminance: ±0.4%; Chromaticity: ±0.003  
 Inter-point error: Luminance: ±0.2 %; Chromaticity: ±0.0003  
 Temperature: 35° C; Relative humidity: 55 %; Period under these conditions: 336 hours (14 days)  
 Accuracy: Luminance: ±1%; Chromaticity: ±0.006  
 Inter-point error: Luminance: ±0.5 %; Chromaticity: ±0.001  
 These differences in display values are due to the instrument materials and/or components being affected by the temperature and humidity conditions of long-term use or storage. In particular, optical filters are easily affected by temperature or humidity. Although measures have been taken to improve resistance to temperature/humidity changes, the accumulated effect of long-term use or storage may affect the displayed values.

- KONICA MINOLTA and the Konica Minolta logo and the symbol mark, and "Giving Shape to Ideas" are registered trademarks or trademarks of KONICA MINOLTA, INC.
- Other company names and product names used herein are trademarks or registered trademarks of the respective companies
- The specifications and drawings given here are subject to change without prior notice.
- Some lamp control methods may make accurate measurements difficult.  
For details, please contact your nearest Konica Minolta sales office or dealer.
- If you have any questions about specifications, please contact your Konica Minolta representative.



### SAFETY PRECAUTIONS

For correct use and for your safety, be sure to read the instruction manual before using the instrument.

- Always connect the instrument to the specified power supply voltage. Improper connection may cause a fire or electric shock.

**KONICA MINOLTA, INC.**  
 Konica Minolta Sensing Americas, Inc.  
 Konica Minolta Sensing Europe B.V.

Osaka, Japan  
 New Jersey, U.S.A.  
 European Headquarter /BENELUX  
 German Office  
 French Office  
 UK Office  
 Italian Office  
 Swiss Office  
 Nordic Office  
 Polish Office  
 SE Sales Division  
 Beijing Office  
 Guangzhou Office  
 Chongqing Office  
 Qingdao Office  
 Wuhan Office

**Phone** : 888-473-2656 (in USA), 201-236-4300 (outside USA)  
 Nieuwegein, Netherlands **Phone** : +31 (0) 30 248-1193  
 München, Germany **Phone** : +49(0)89 4357 156 0  
 Roissy CDG, France **Phone** : +33(0) 1 80 11 10 70  
 Warrington, United Kingdom **Phone** : +44(0) 1925 467300  
 Cinisello Balsamo, Italy **Phone** : +39 02849488.00  
 Dietikon, Switzerland **Phone** : +41 (0) 43 322-9800  
 Västra Frölunda, Sweden **Phone** : +46(0)31 7099464  
 Wrocław, Poland **Phone** : +48(0)71 33050-01  
 Shanghai, China **Phone** : +86-(0)21-5489 0202  
 Beijing, China **Phone** : +86-(0)10-8522 1551  
 Guangdong, China **Phone** : +86-(0)20-3826 4220  
 Chongqing, China **Phone** : +86-(0)23-6773 4988  
 Shandong, China **Phone** : +86-(0)532-8079 1871  
 Hubei, China **Phone** : +86-(0)27-8544 9942  
 Singapore **Phone** : +65 6563-5533  
 Seoul, Korea **Phone** : +82(0)2-523-9726  
 Bangkok, Thailand **Phone** : +66-2361-3730

**Fax** : 201-785-2482  
 +31 (0) 30 248-1280  
 +49(0)89 4357 156 99  
 +33(0) 1 80 11 10 82  
 +44(0) 1925 711143  
 +39 02849488.30  
 +41 (0) 43 322-9809  
 +48 (0)71 734 52 10  
 +86-(0)21-5489 0005  
 +86-(0)10-8522 1241  
 +86-(0)20-3826 4223  
 +86-(0)23-6773 4799  
 +86-(0)532-8079 1873  
 +86-(0)27-8544 9991  
 +65 6560-9721  
 +82(0)2-523-9729  
 +66-2361-3771

**Konica Minolta (CHINA) Investment Ltd.**

**Konica Minolta Sensing Singapore Pte Ltd.**  
**Konica Minolta, Inc.**  
**Konica Minolta, Inc.**

Optics Company, Korea  
 Optics Company, Sensing Business  
 Thailand Representative Office

Addresses and telephone/fax numbers are subject to change without notice. For the latest contact information, please refer to the KONICA MINOLTA Worldwide Offices web page :

<http://konicaminolta.com/instruments/network>